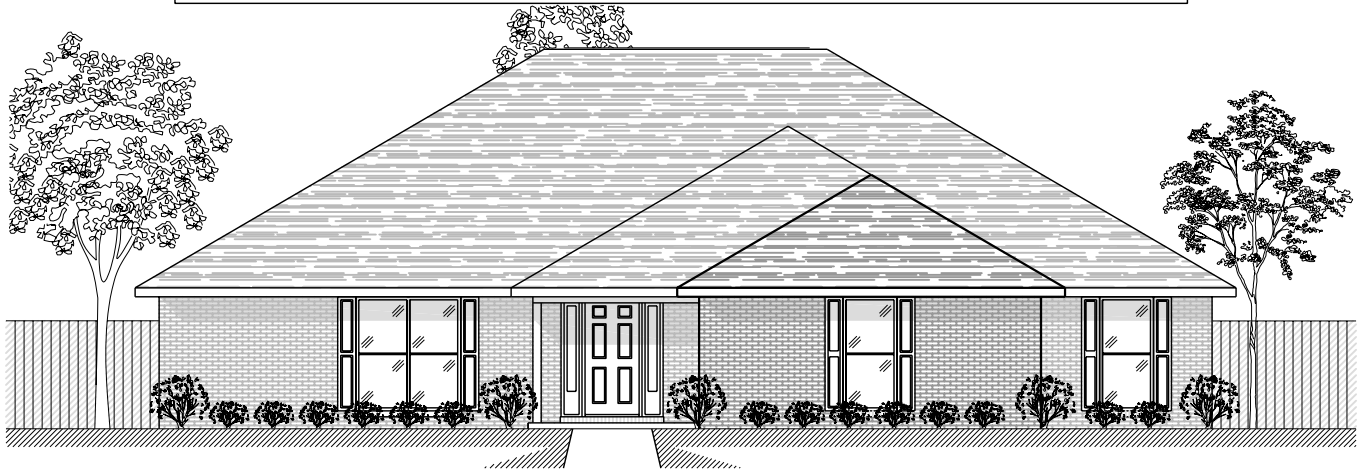
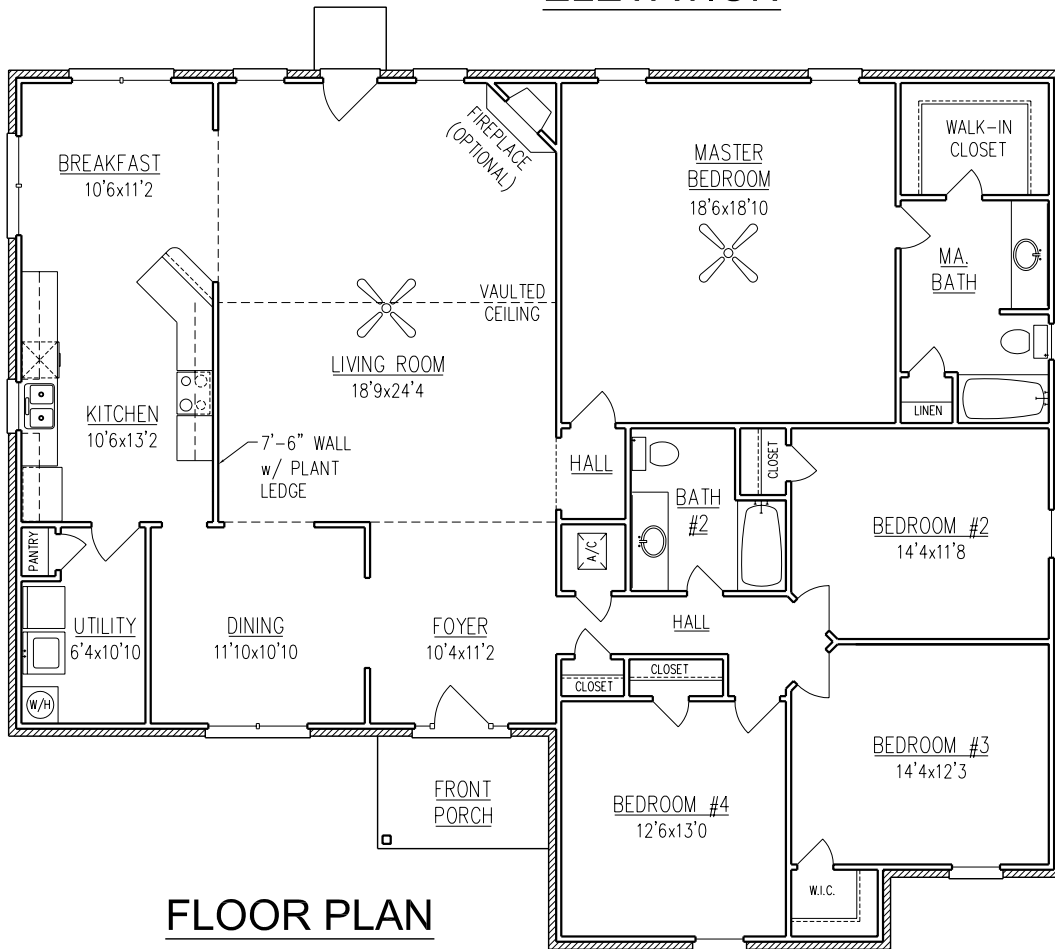


# AZALEA TRACE II

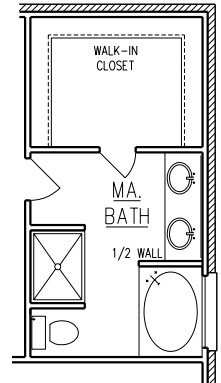
2,464 Sq. Ft.



**ELEVATION**



**FLOOR PLAN**



**OPTIONAL  
MA. BATH.**

WIDTH - 58'-6"  
DEPTH - 48'-10"

NOTE: ALL DIMENSIONS APPROXIMATE

Mobile Office (251) 473-8600 Fax (251) 473-8797  
2936 McVay Drive North  
Mobile, AL 36606 [www.BrickHome.net](http://www.BrickHome.net)  
Foley Office (251) 943-2695 Fax (251) 943-7096  
16478 Highway 98 West  
Foley, AL 36535 Toll Free 1-800-924-7288



**BENCHMARK**  
BOYL DIVISION

Rev. 11/29/06

BROCHURE IS AN EXAMPLE NOT AN EXACT REPRESENTATION. ELEVATION AND FEATURES MAY DIFFER.