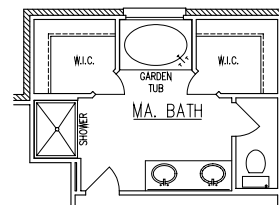
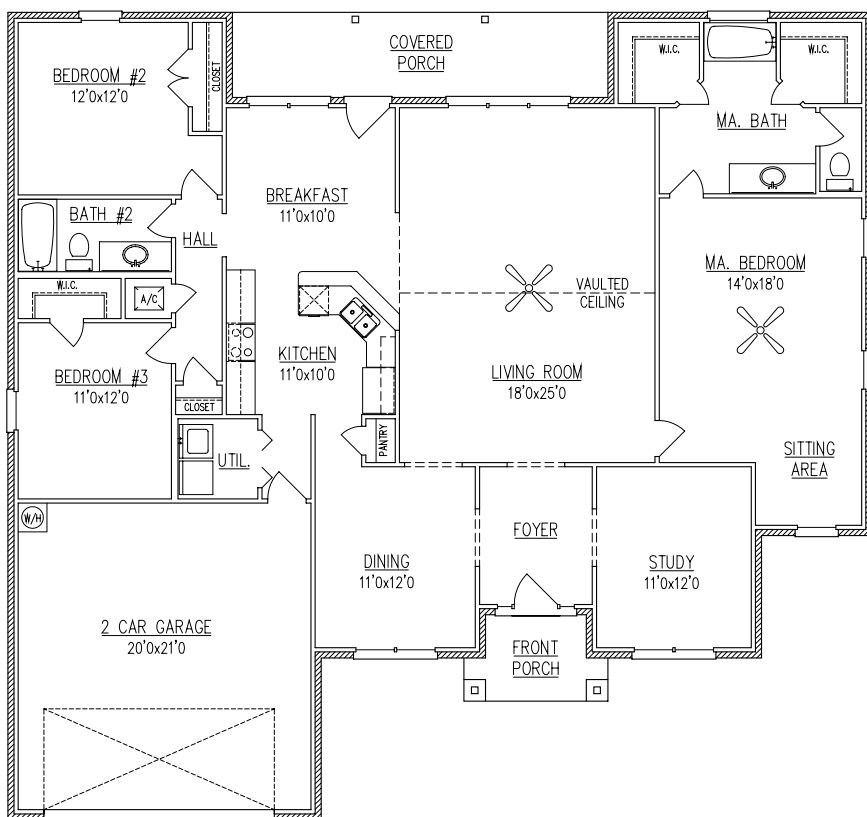


WHITFIELD

2,223 Sq. Ft.



ELEVATION



OPTIONAL
MA. BATH.

FLOOR PLAN

WIDTH - 60'-0"
DEPTH - 56'-1"

NOTE: ALL DIMENSIONS APPROXIMATE



BENCHMARK
BOYL DIVISION

Mobile Office (251) 473-8600 Fax (251) 473-8797
2936 McVay Drive North
Mobile, AL 36606 www.boyl.net
Foley Office (251) 943-2695 Fax (251) 943-7096
16478 Highway 98 West
Foley, AL 36535 Toll Free 1-800-924-7288

Revised 10/17/07

BROCHURE IS AN EXAMPLE NOT AN EXACT REPRESENTATION. ELEVATION AND FEATURES MAY DIFFER.