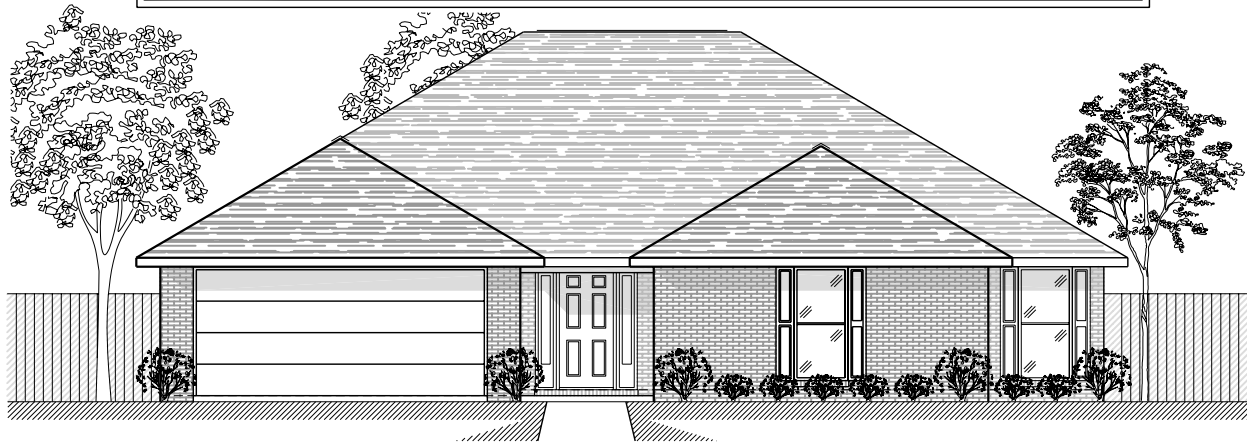
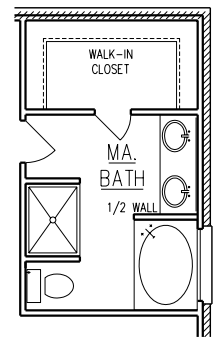
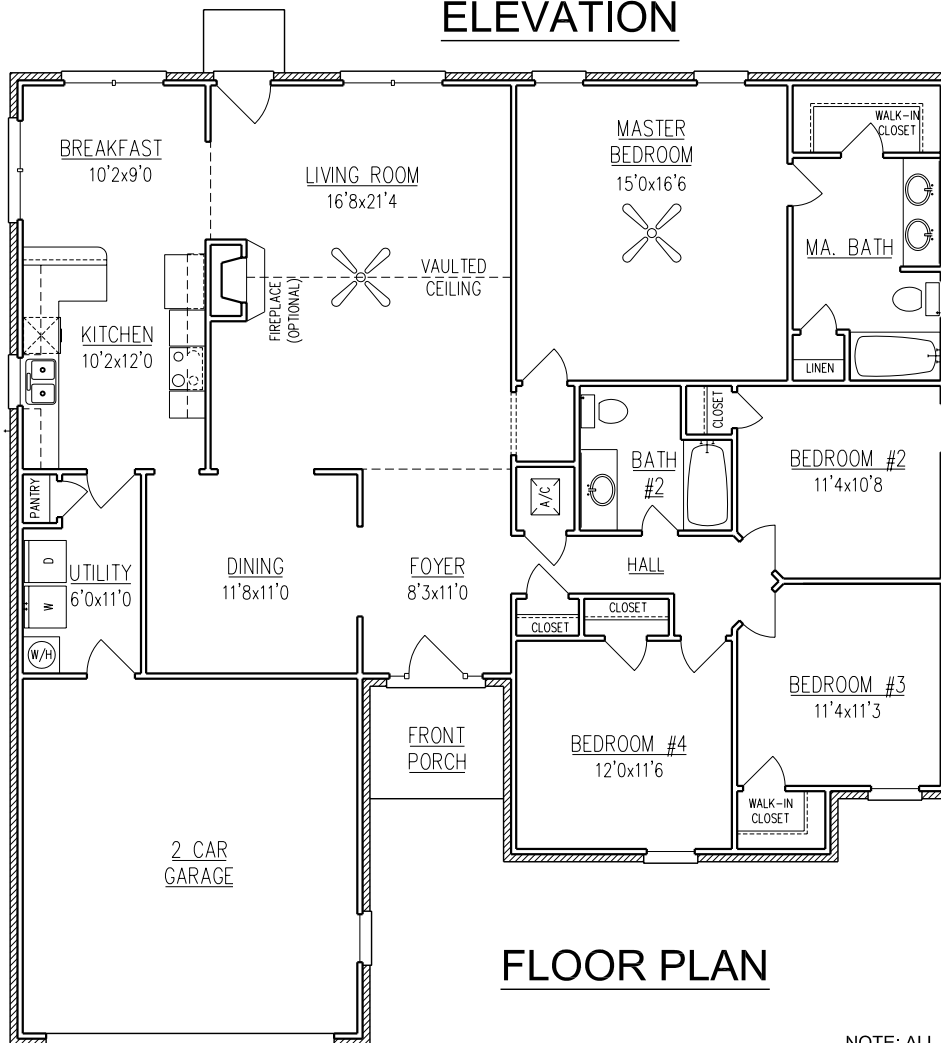


AZALEA TRACE

1,999 SQ. FT.



ELEVATION



OPTIONAL MA. BATH.

FLOOR PLAN

WIDTH - 52'-5"
DEPTH - 52'-1"

NOTE: ALL DIMENSIONS APPROXIMATE

Mobile Office (251) 473-8600 Fax (251) 473-8797
2936 McVay Drive North
Mobile, AL 36606 www.BrickHome.net
Foley Office (251) 943-2695 Fax (251) 943-7096
16478 Highway 98 West
Foley, AL 36535 Toll Free 1-800-924-7288

Rev. 11/29/06



BROCHURE IS AN EXAMPLE NOT AN EXACT REPRESENTATION. ELEVATION AND FEATURES MAY DIFFER.