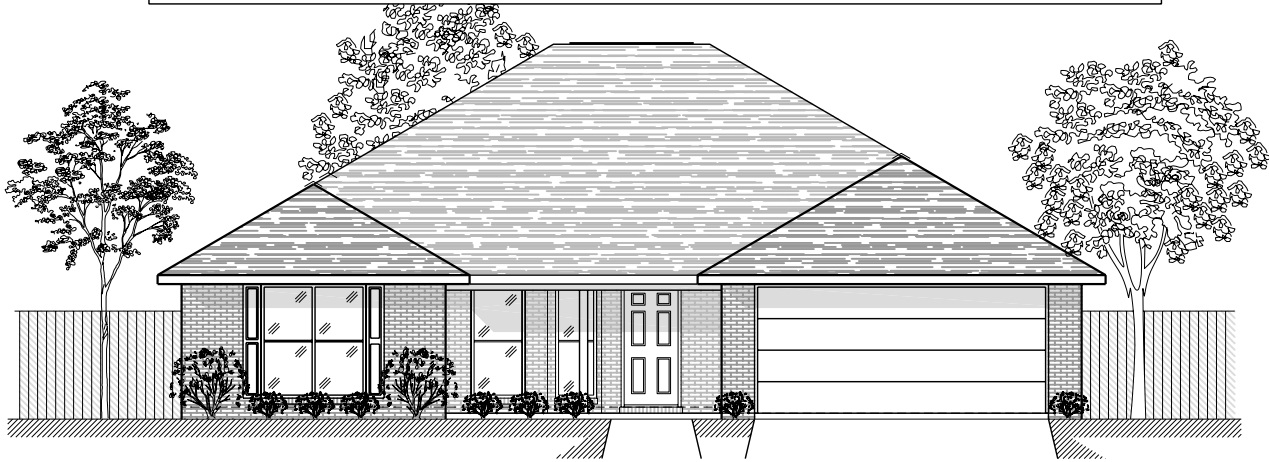
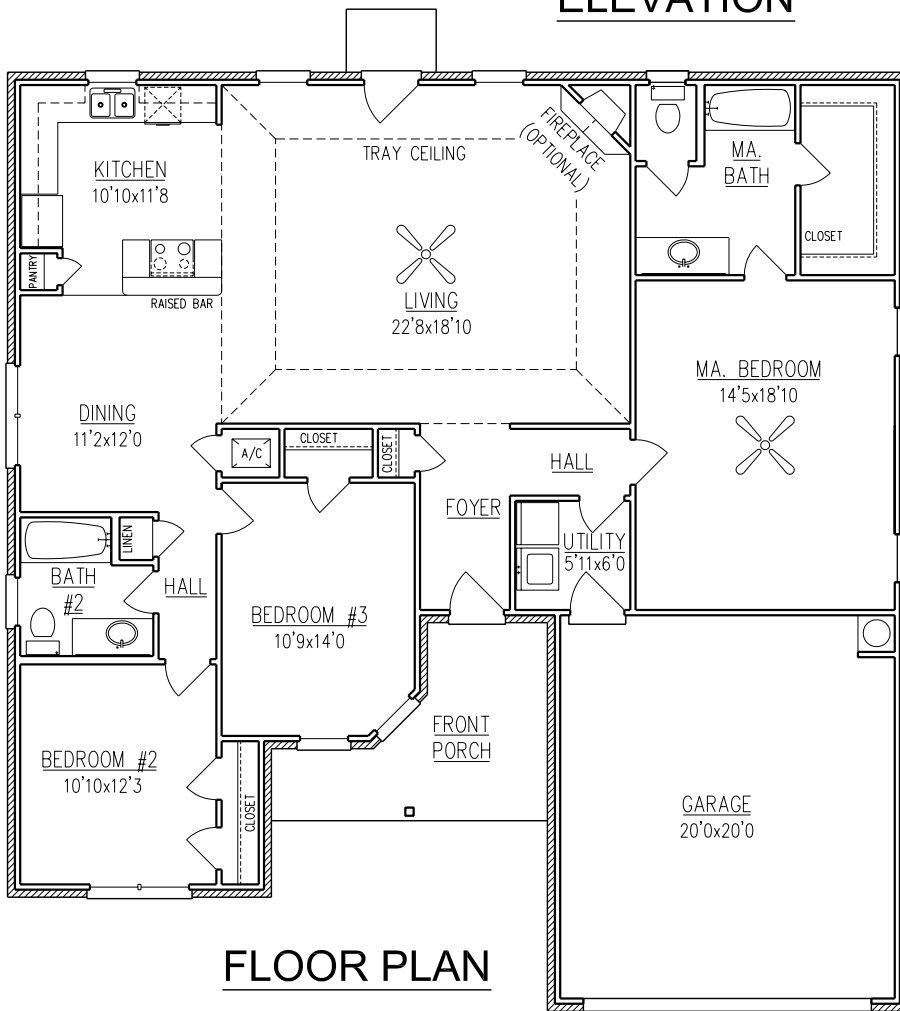


KINGSBROOKE III

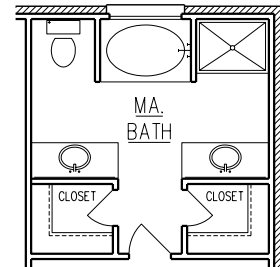
1,800 Sq. Ft.



ELEVATION



FLOOR PLAN



**OPTIONAL
MA. BATH.**

WIDTH - 50'-0"
DEPTH - 52'-2"

NOTE: ALL DIMENSIONS APPROXIMATE

Rev. 11/30/06



BENCHMARK
BOYL DIVISION

Mobile Office (251) 473-8600 Fax (251) 473-8797
2936 McVay Drive North
Mobile, AL 36606 www.BrickHome.net
Foley Office (251) 943-2695 Fax (251) 943-7096
16478 Highway 98 West
Foley, AL 36535 Toll Free 1-800-924-7288

BROCHURE IS AN EXAMPLE NOT AN EXACT REPRESENTATION. ELEVATION AND FEATURES MAY DIFFER.