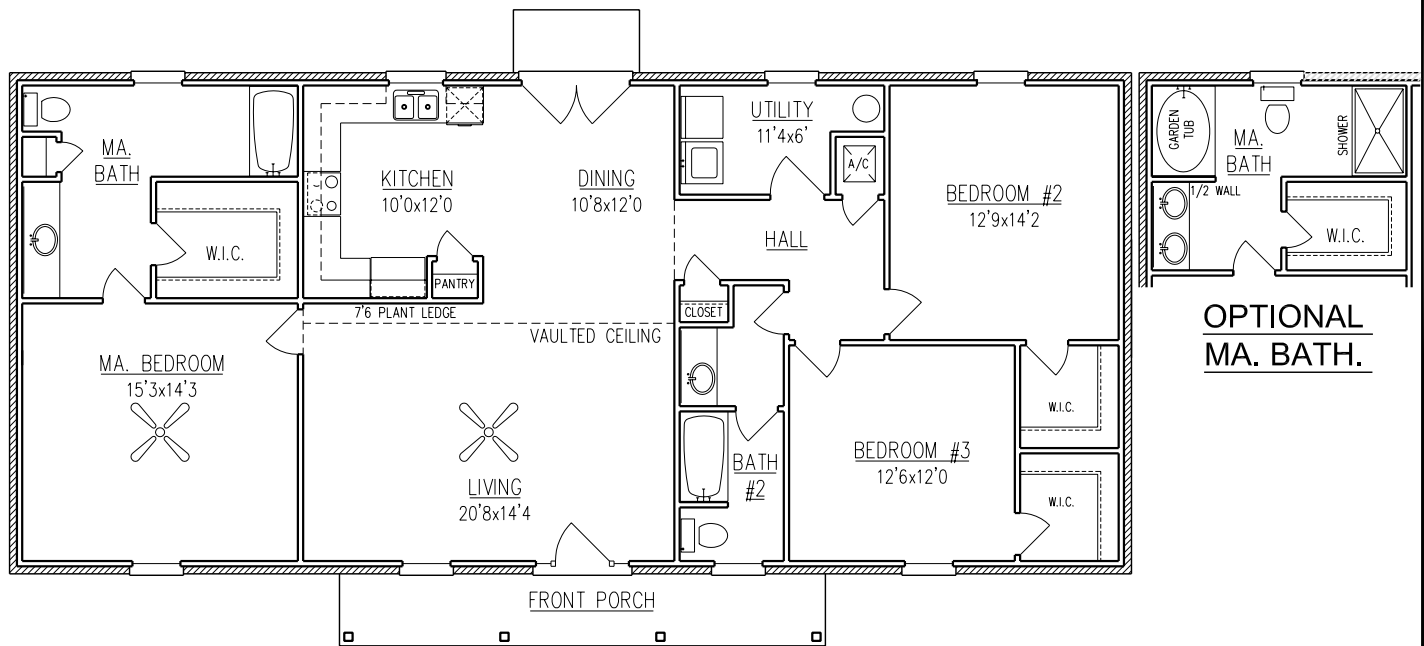


KINGSWOOD II

1,735 SQ. FT.



ELEVATION



FLOOR PLAN

WIDTH - 62'-4"
DEPTH - 31'-10"

NOTE: ALL DIMENSIONS APPROXIMATE

Mobile Office (251) 473-8600 Fax (251) 473-8797
2936 McVay Drive North
Mobile, AL 36606 www.BrickHome.net
Foley Office (251) 943-2695 Fax (251) 943-7096
16478 Highway 98 West
Foley, AL 36535 Toll Free 1-800-924-7288



BENCHMARK
BOYL DIVISION

Rev. 11/30/06

BROCHURE IS AN EXAMPLE NOT AN EXACT REPRESENTATION. ELEVATION AND FEATURES MAY DIFFER.