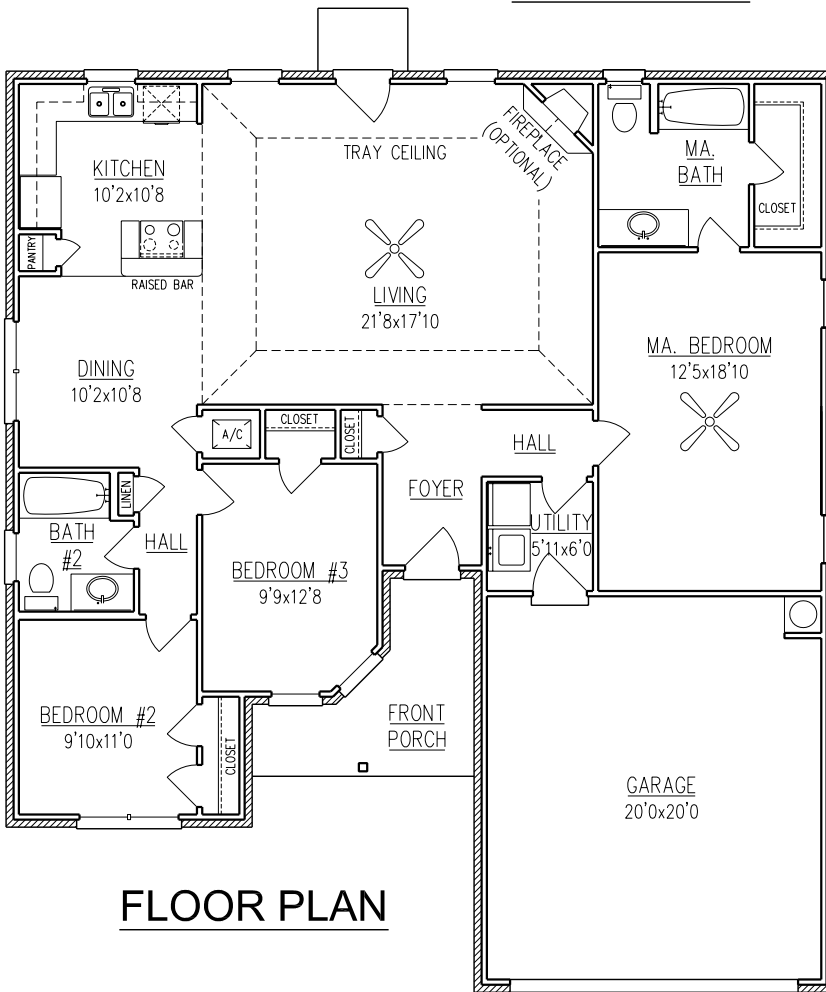


# KINGSBROOKE II

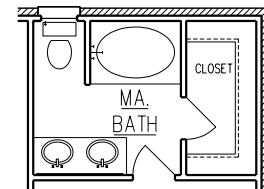
1,553 Sq. Ft.



ELEVATION



FLOOR PLAN



OPTIONAL  
MA. BATH.

WIDTH - 46'-0"  
DEPTH - 51'-2"

NOTE: ALL DIMENSIONS APPROXIMATE

Rev. 11/30/06



**BENCHMARK**  
BOYL DIVISION

Mobile Office (251) 473-8600 Fax (251) 473-8797  
2936 McVay Drive North  
Mobile, AL 36606 [www.BrickHome.net](http://www.BrickHome.net)  
Foley Office (251) 943-2695 Fax (251) 943-7096  
16478 Highway 98 West  
Foley, AL 36535 Toll Free 1-800-924-7288

BROCHURE IS AN EXAMPLE NOT AN EXACT REPRESENTATION. ELEVATION AND FEATURES MAY DIFFER.